

Mixture Analysis

MIR & Raman Spectral Deconvolution

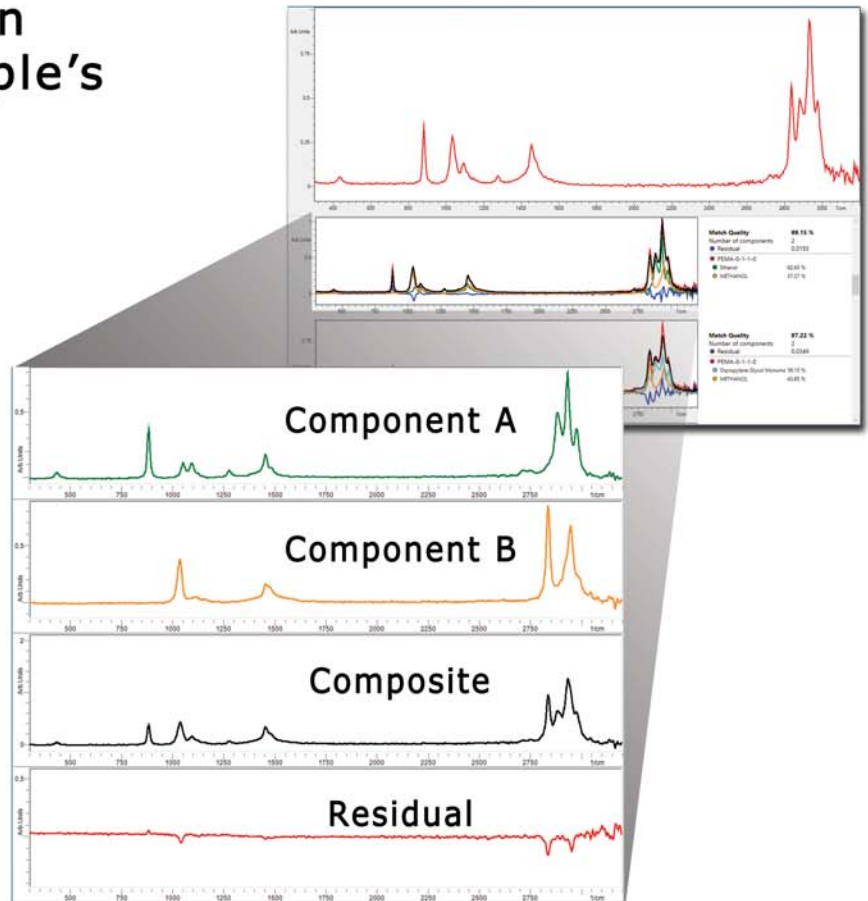
Identification of unknown components from a sample's spectral data

Identification of contaminants

Verification of known sample components

Determination of relative component mixing ratio

Automatic analysis with overall mixture match quality report



Only pure reference spectral databases required!

Automatic detection of mixing components!

No pre-selection of reference data subsets!

Supports commercial databases of
and custom spectral databases

S.T.JAPAN
europe gmbh